

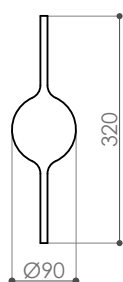
melogranoblu

HYDRA STIGMA glass

design E. Rocchi & M. Crema - 2008

DESCRIZIONE	Hydra system hand blown glass pendant
Environment:	Indoor
Mounting:	Suspension with metallic mesh cord or with steel cable
Body:	Transparent hand blown glass
Weight:	135 g

dimensions in mm



Stigma



melogranoblu

LIGHT SOURCE USABLE

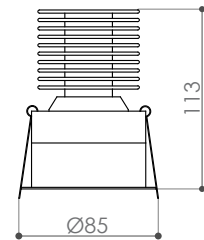
IP20   CE **LED**

→ INDIRECT LIGHT_outer glass source

→ RECESSED (only with false ceiling)

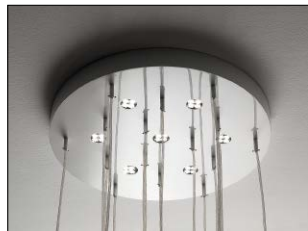


Recessed LED spotlight 10W, 24Vdc, 2700 K cri93 optic 6° circular body ø 85 mm.

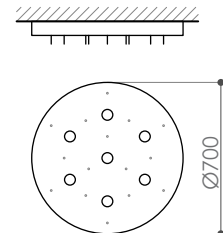


→ CEILING

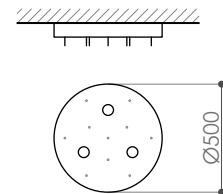
→ standard dimensions:



Round ceiling LED Ø 70 cm varnished or nikel plate 7 x 10W LED dimmable, 2700 K optic 10°. 15 fixing supports for metallic mesh cords.



Round ceiling LED Ø 50 cm varnished or nikel plate 3 x 10W LED dimmable, 2700 K optic 10°. 10 fixing supports for metallic mesh cords.

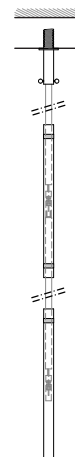


→ custom: melogranoblu can design and product custom ceilings

→ DIRECT LIGHT_inner glass source

LED module 2,7 watt, 24 Vdc
2700K, 250 lm CRI90

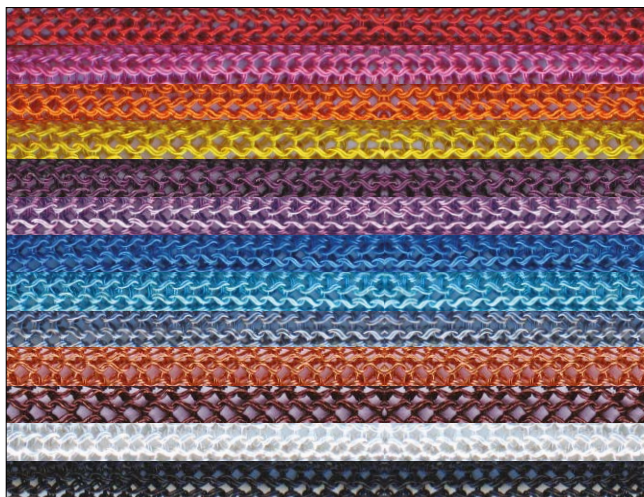
Can only be used with metallic mesh cord hanging system and only in the presence of false ceiling.



melogranoblu

HANGING SYSTEMS

→ METALLIC MESH CORD Ø 8mm



- #T11 Red
- #T34 Fuxia
- #T39 Orange
- #T26 Gold
- #T36 Purple
- #T35 Wistaria
- #T12 China Blue
- #T29 Turquoise
- #T08 Titanium
- #T00 Copper
- #T20 Brown
- #T07 Silver
- #T21 Black

→ STEEL CABLE Ø 0,6 mm

The steel cable hanging system does not allow to use the inner glass light source.

